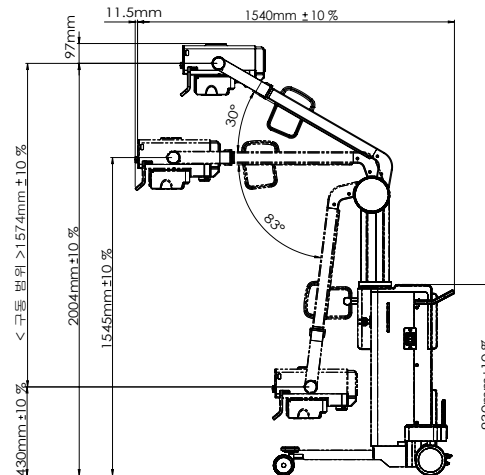
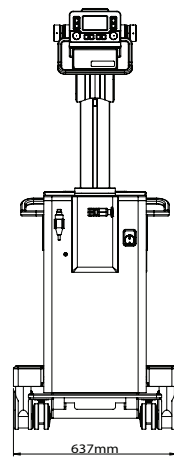


Size



Specification

Type	5kW Mobile Radiography		RAD	kV	40kV ~ 110kV (1 kV Step)(±8 %)
	Max Power	5kW		mAs	0.32 ~ 200mAs (±10%+0.2mAs)
Input Power	AC		Collimator	* Auto Collimator * 4.3" Touch screen OP * Ultrasound SID Sensor * kV, mAs, APR control	
	100-240 V 50/60Hz, 16A			Battery (Option)	12V / 2Ah*26ea Individual cell charging (cc, cv function)
X-Ray Tube	Type	Monoblock			
	Focus	Focus 0.5, 1.8 mm			

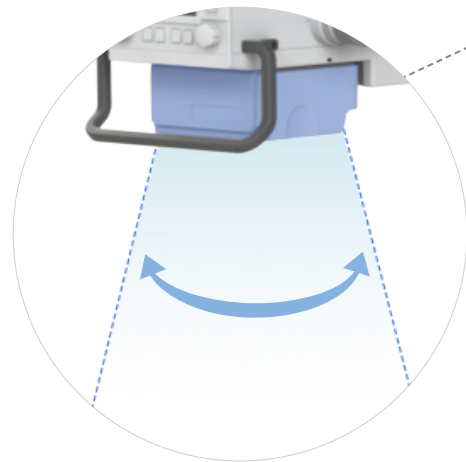


# SMX-50A

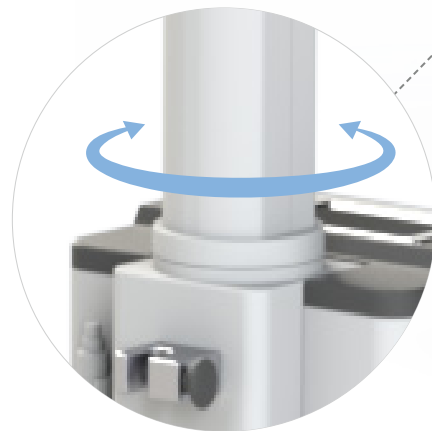
5kW  
220V AC TYPE



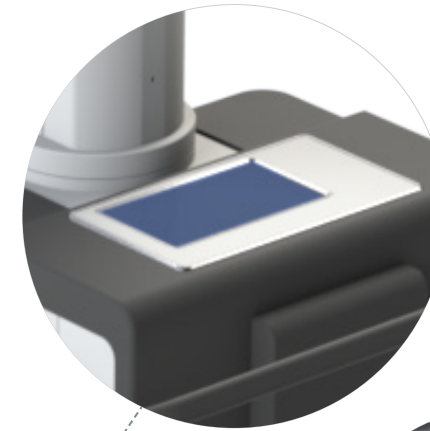
**5kW Monoblock Type**  
4.3" 터치 디스플레이



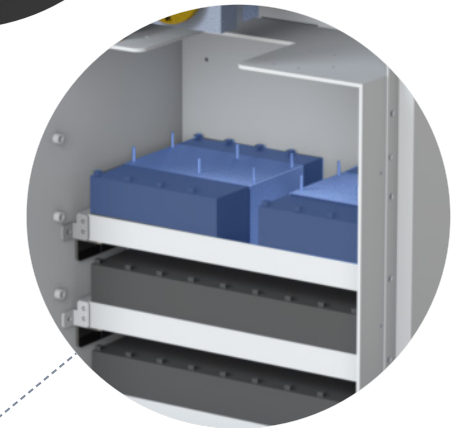
**Collimator**  
X-ray 조사 면적 Max 46×46 cm  
램프 (LED) More than 100 lux



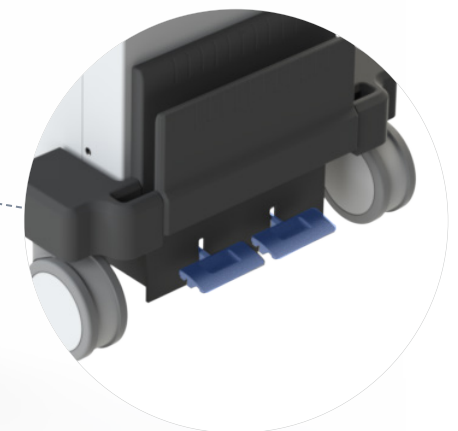
**Tube Arm**  
튜브 암 수평 회전 각도 ± 90°



**Operation Panel**  
7" 터치 X-ray 제어 패널



**Optional : SMX-50 (Battery Type)**  
12V / 2Ah\*26ea  
배터리 완전 충전 후 대기 사용시간 : 12시간 이상



**Parking Brake**  
수동 패달 타입

