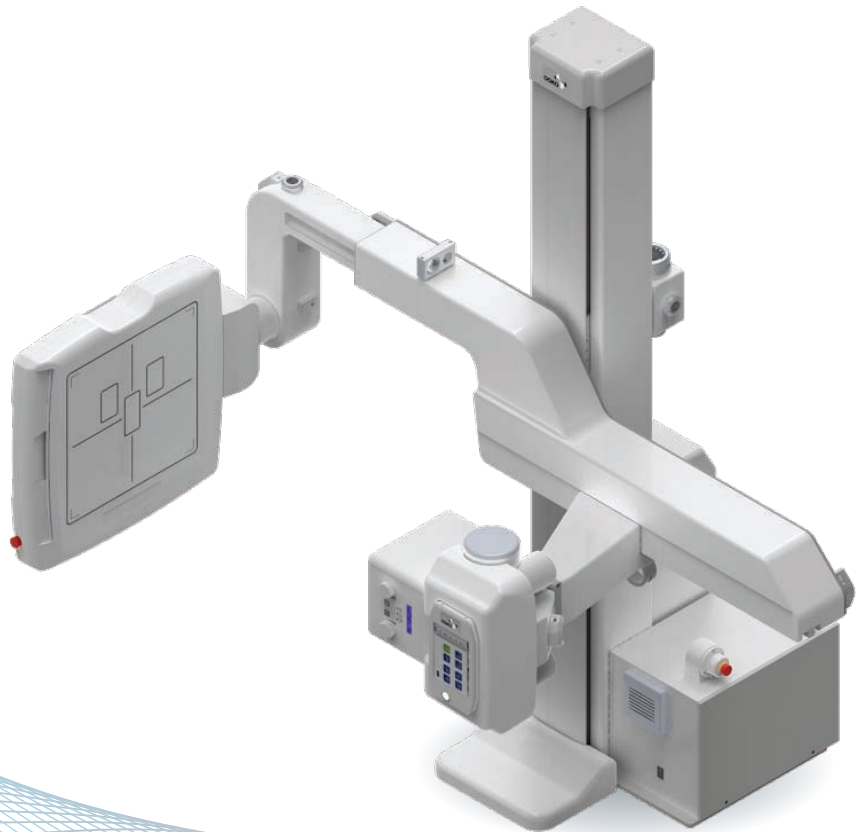


ELIAN

U-Arm Type Digital Radiography

When a Powerful,
Compact Digital Radiography
U-Arm goes big



Stability

Standard H/W Configuration

Auto Triggering
DETECTOR

EDGE-SS



Rotating Anode
TUBE

FOCAL SPOT
→ 0.6 / 1.2mm

ANODE HEAT
→ 300KHU



High Frequency
GENERATOR

630mA / 800mA
50kW/3Ø/400-480VAC
65kW/3Ø/400-480VAC



Multilayer, Automatic
COLLIMATOR

WHITE LED
Max. 150kVp-4mA



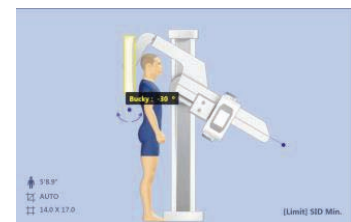
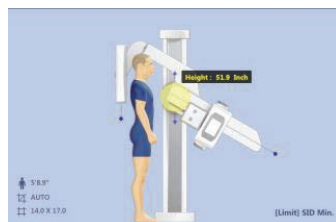
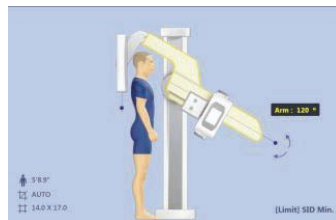
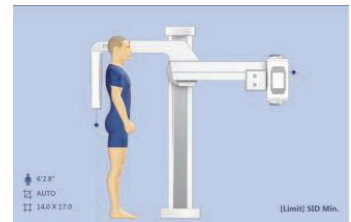
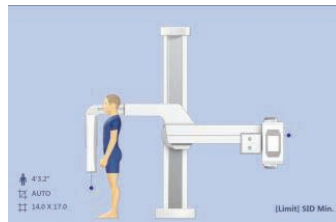
Touch Screen
CONTROL

8" DISPLAY



User-Specific, Automatic Positioning

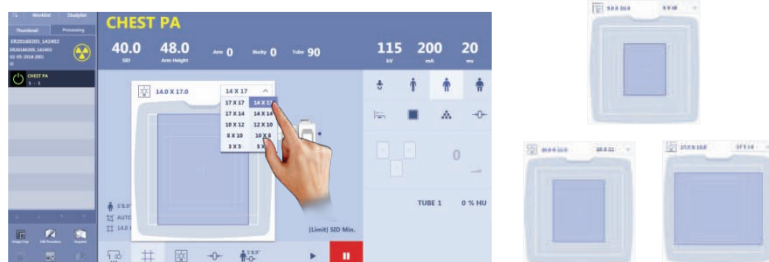
The ELIAN's fully motorized movements for SID, arm rotation, height and detector angle can be automatically programmed to user-specific radiographic positions utilizing the intuitive touch-screen located on the tube side, a hand held remote control, or by using the technologist workstation.



Automatic Collimation with Remote Collimator Control (RCC)

The ELIAN comes with automatic collimation that is pre-programmed to the specific body part being examined by the way of the APR.

The technologist can also remotely adjust it, add and save a new preset from the technologist workstation using the RCC menu and employing the "Touch and Drag" method.



Flugel Software

Flugel Acquisition Software provides optimized image quality through the use of exam specific algorithms and advanced image processing.

This is complemented with touch-screen menus designed to streamline workflow such as APR, grid artifact suppression, programmable generator technique settings, and U-arm positioning control.



Brilliant

Preset Positioning Technology

Elian's intuitive touch screen allows the operator to configure and has up to 8 pre-set positions.

With detailed information such as SID, arm angle, detector angle, height of arm and tube angle, the system position and status are displayed on the touch screen.



Safety

Safety Features

Patient and operator safety comes first with the ELIAN.

The ELIAN is equipped with nine (9) anti-collision motion sensors that can be adjusted for sensitivity, halting arm and detector motion when obstacles cross their path.

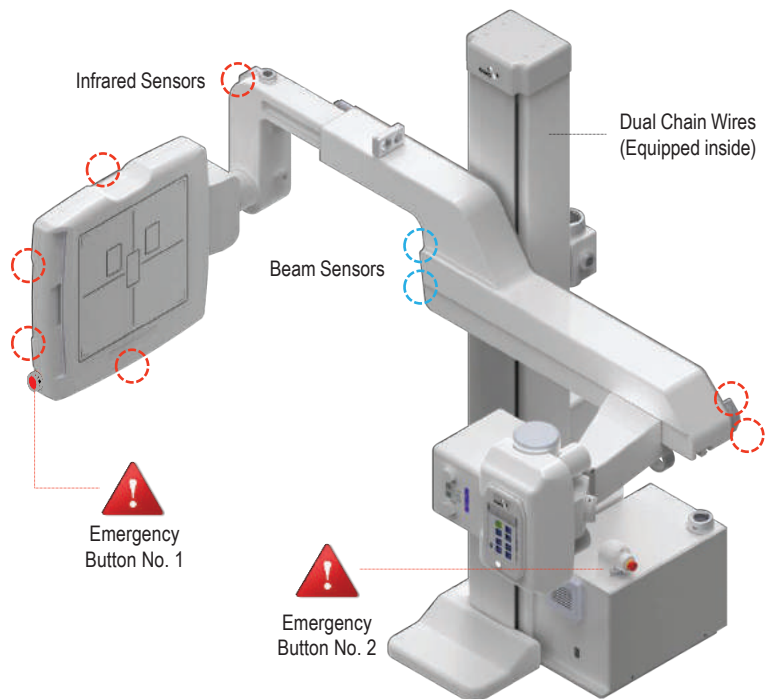
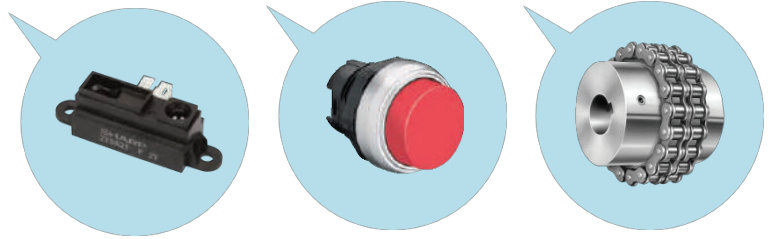
In addition, two (2) emergency buttons are strategically located should the operator need to immediately disable any movement of the unit.

The Dual Chain that connect the U-Arm and Motor, controls U-Arm faster and more accurate, and secures patients safety.

Because you can't always see what's in front of you.

When you look over the impressive list of safety features, you'll know how well-equipped ELIAN is when it comes to all the important area of safety.

Nine anti-collision motion sensors, two emergency buttons and Dual chain arm movement - they're all included as standard equipment.



Auto Stitching

The ELIAN has the ability to be automatically positioned sequentially for spine and long-leg stitching examinations. Up to three exposure positions can be programmed.

Automatic adjustment for different patient heights is obtained through the use of the ELIAN's Automatic Height Compensation (AHC) feature.

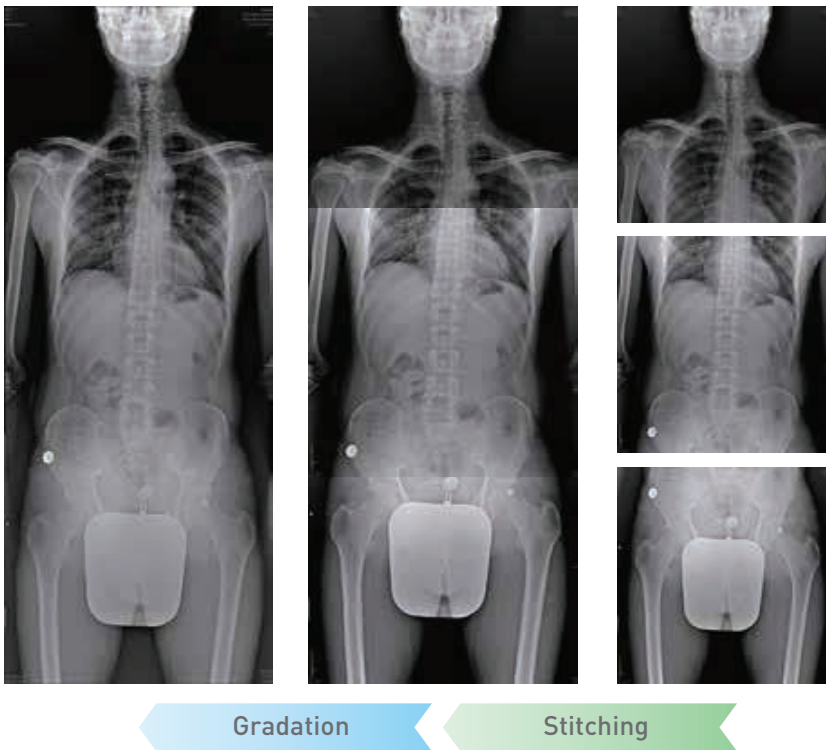
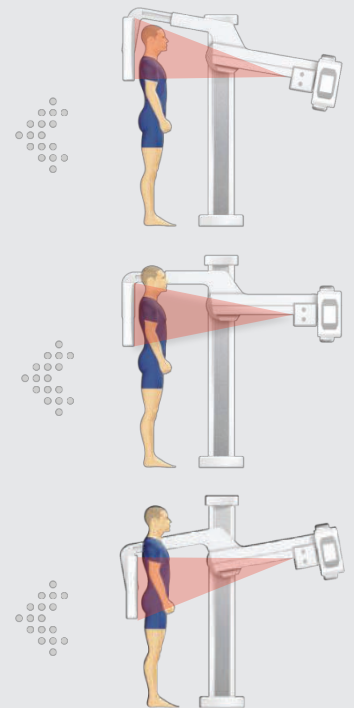


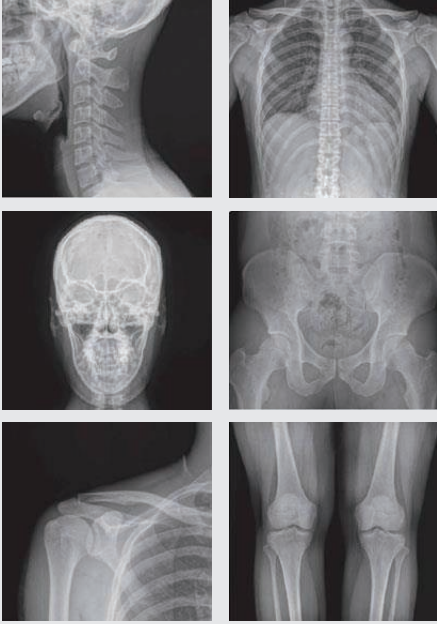
Image stitching is achieved by selecting one of three methods:

Full-Auto, Semi Auto or Manual. To eliminate the exposure borders of each image due to varying densities. OSKO's advanced gradation process is automatically applied.

“A stitched image provides greater diagnostic clarity, than separate images.”



Gallery



Specification

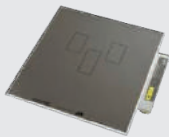
CONFIGURATION	ITEMS	SPECIFICATION & DESCRIPTIONS
GENERATOR	Power Output	50kW
	kV Range	40-150kV
	mA Range	10-630mA
	Input Phase / Voltage	3Φ / 400-480Vac
	Exposure Timer Range	6.3s Max.
TUBE	Focal Spot Value	0.6 / 1.2mm
	Target Angle	12°
	Target Diameter	74mm
	Anode Heat Content	300KHU(210kJ)
	Cooling Method	Natural / Forced Air
	DETECTOR	Power
Inorganic Phosphor Type		CsI (Cesium Iodide)
Receptor Type		a-Si (Amorphous Silicon)
Photoconductor		TFT (Thin-Film Transistor)
Total Pixel Matrix		3328 x 3328 Pixels
Pixel Area		422.7(H) x 422.7(V) mm
Pixel Pitch		127μm
AD Conversion		14 / 16bit
Data Transfer		1Gbps Ethernet Port
Preview Time		≤2 sec.
U-ARM MECHANISM	Column Height	1,998mm
	U-arm vertical travel	1,090mm
	U-arm Central Beam Min	470mm
	U-arm Central Beam Max	1,560mm
	U-arm Rotation range	-30° ~ +120°
	Detector Rotation Range	-45° ~ +45°
	SID Range	1,000mm ~ 1,800mm
	Tube Rotation Range	-90° ~ +90°
	Mechanism control	7" Touch Screen & Remote Controller
	MOBILE TABLE	Material
Load Capacity		200Kg / Wheels with Brake

Optional Items

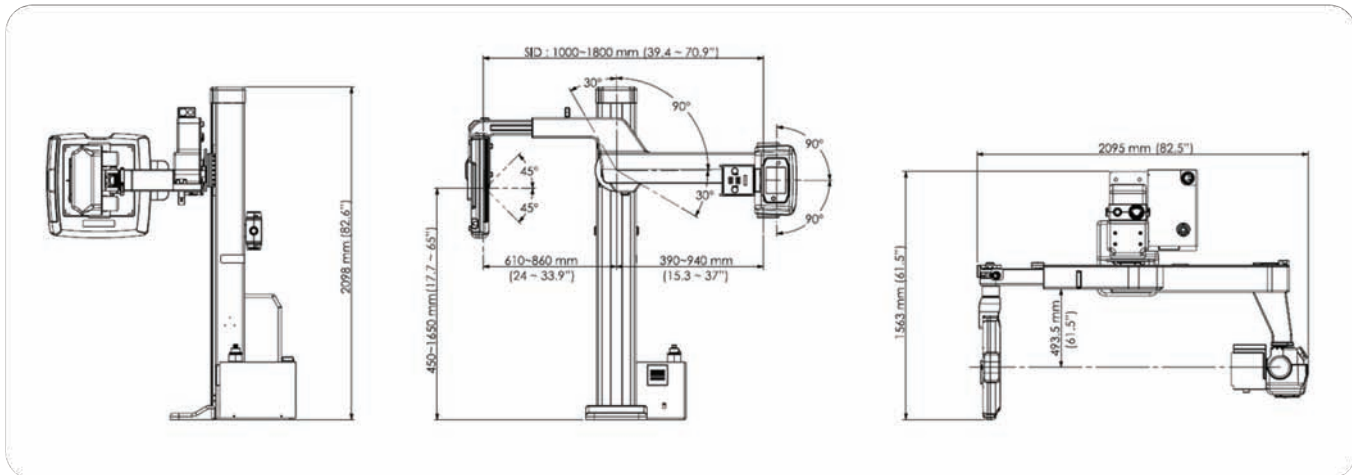
DAP ¹⁾



AEC ²⁾ ION CHAMBER



- 1) DAP : Dose Area Product
 2) AEC : Automatic Exposure Control



THE BENEFITS OF DIGITAL RADIOGRAPHY

INCREASES THE EFFICIENCY OF TODAY'S RADIOLOGY PRACTICE !

01 

INCREASE PRODUCTION AND SERVICE FLEXIBILITY

Faster digital processing allows for an increased productivity, condensing more flexibility in your schedule

02 

SAVES TIME

View images instantly on your operatory computer, saving staff and patients' time

03 

ABILITY TO SEE MORE PATIENTS

No more film processing time means your per-patient visit time decreases, making room for new patients

05 

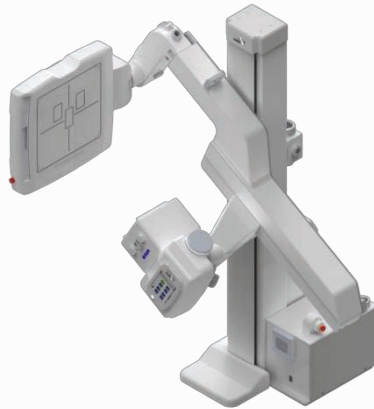
SAVE MONEY

Long-term cost of equipment can work out to less when compared to film processing chemicals, purchasing film, and maintenance.

04 

REDUCED EXPOSURE TO RADIATION

Its about 50 to 90% less than that required for film used in conventional radiography.





www.OSKOmedical.com

OSKO, Inc.
8085 NW 90th Street,
Medley, FL 33166 U.S.A.
Tel : +1-305-599-7161
E-mail : info@oskomedical.com

OSKO ANA Co., Ltd.
E-mail : ryan@oskomedical.com

OSKOMEX S.A. DE C.V MEXICO CITY
E-mail : ian@oskomedical.com